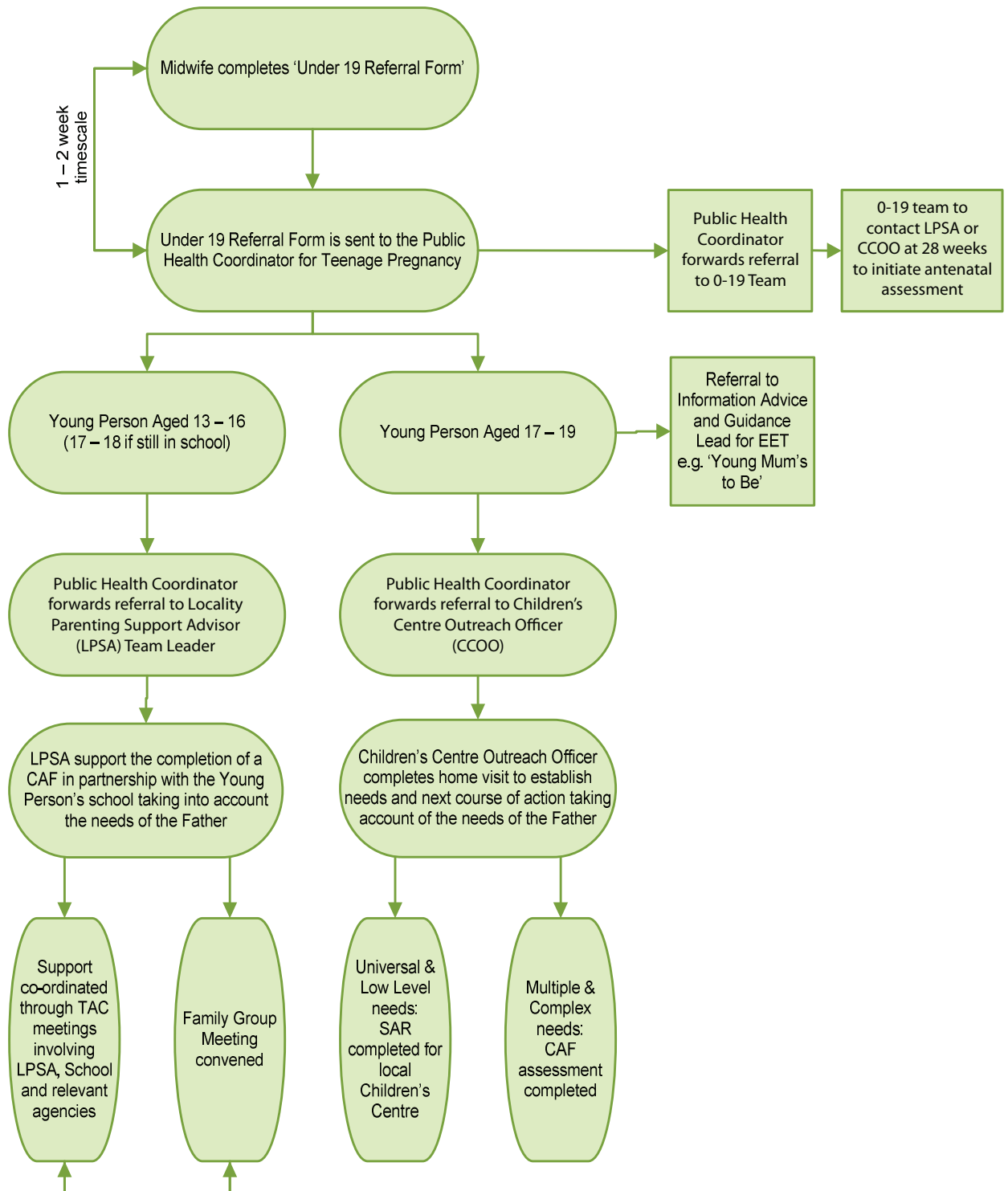


Support Pathway for Parents under 20

Flowchart



If at any point throughout this process you consider the young person or their child is at risk of harm a referral must be made to Children's Services – 0300 300 8149

Support Pathway for Parents under 20

NHS
Bedfordshire

Central
Bedfordshire

Additional Information:

Public Health Coordinator (Teenage Pregnancy) NHS Bedfordshire

Responsible for monitoring the outcomes of young parents supported throughout the pathway. For further information on any aspect of the pathway, support for teenage parents and local information contact:

Charlotte Jackson- 01525 636928 or charlotte.jackson@bedfordshire.nhs.uk

Midwifery Support

Upon booking in with a midwife, the young person will complete a referral form. On this form they consent to being contacted by either the Locality Parenting Support Advisor if they are aged 13-16 or the Children's Centre Outreach Officer if they are aged 17-19.

The majority of under 19s in Central Bedfordshire will be supported by the Teenage Pregnancy Midwifery Team at Luton & Dunstable Hospital, although there will also be a significant number who book in at Bedford Hospital.

Luton and Dunstable- Teenage Pregnancy Midwifery Team

- Donna Worth- 07714 064412
- Shirley Renholds-07810 640666
- Emma Dimmock- 07714064378

Bedford Hospital

There is not a specific Teenage Pregnancy Midwifery Team however the process for support is the same.

- Bedford Hospital NHS Trust- Women and Children's Services- 01234 795747

Locality Parenting Support Advisor (LPSA) – Supporting 13-16s

The LPSA will contact the young person and establish the key member of staff in school with responsibility for supporting pregnant pupils. A CAF may be initiated at this stage, if it has not been previously, to establish needs. The LPSA can support the young person to access a range of support in the community both during and after pregnancy. **Contact-** Ginny Redbond (Parenting Team Leader) - Central Bedfordshire Council- 07717 547419

All Saints Academy- If the young person attends All Saints Academy the Parent Support Advisor employed by the Academy will take on the role of the LPSA.

Children's Centre Outreach Officer – Supporting 17-19s

The CCOO will contact the young person initially by phone and explain the support available locally. The CCOO can visit the young person at home and will put together a plan of support to meet the young person's needs. **Contact-** Louise Watson (CCOO) - 07824 499649 or 0300 300 6071

Family Group Meetings- A Family Group Meeting (FGM) is arranged and facilitated by the Family Group Meeting Coordinator, who is not involved in making decisions about the child. The meetings are a means of enabling families to find solutions to their own problems within a professionally supportive framework. **Contact-** Thomas Sanctuary, Family Group Meetings Manager (Central Bedfordshire Council) - 0300 300 6729

Housing information and support- for general enquires contact Central Bedfordshire Council on- 0300 300 8306.

Careers Advice and Intensive Support

4ypuk can provide group sessions and 1:1 interviews covering careers advice and intensive support. 4ypuk can support teenage parents to access care to Learn Funding. For further information go to Info at www.4ypuk.com

NCMA (National Childminding Association) Teenage Parent Project- Help broker childcare between parent and childminder and provide general advice and support on childminding as a valuable childcare option. **Contact-** Mark Southwood (Childminding Services Coordinator) 01582 865376 or 07734 734181